

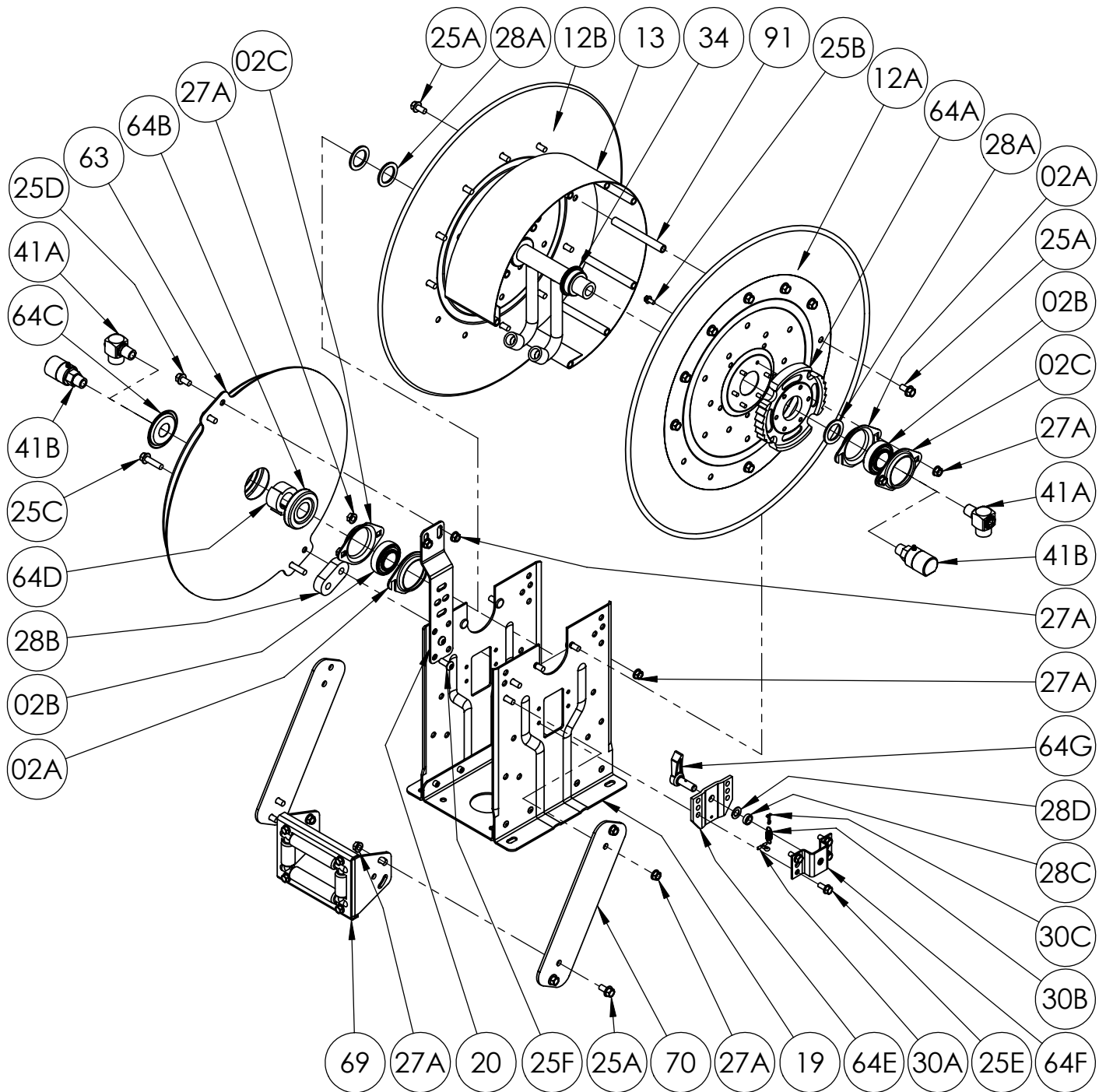


Hannay Reels®

The reel leader.

Hannay Reels, Inc., 553 State Route 143
Westerlo, NY 12193
Telephone 518-797-3791 • Toll Free 1-877-GO-REELS (467-3357)
FAX 1-800-REELING (733-5464)
INT'L FAX (518) 797-3259
Website: www.hannay.com
E-mail: reels@hannay.com

ISO 80 PARTS LIST N-600 SERIES



**PARTS LIST
ISO 80
N-600 SERIES**

When ordering parts

BE SURE TO SPECIFY COMPLETE MODEL NUMBER and SERIAL NUMBER OF REEL.

USE PART NUMBER!

| <u>Item No.</u> | <u>Description</u> | <u>PART NUMBER</u> | <u>Quantity</u> |
|-----------------|--|--------------------|-----------------|
| 02A | Self Aligning Bearing Holder (Slotted) (Steel E-Coated) | 9902.2801 | 2 |
| 02B | 1" Self Aligning Bearing Insert (Plated)..... | 9902.1500 | 2 |
| 02C | Self Aligning Bearing Holder (Steel E-Coated) | 9902.2800 | 2 |
| 02D | 1" Self Aligning Bearing for N Series Complete (Includes 02A, 02B and 02C) | 9902.2600 | 2 |
| 12A | Front Disc..... | Spec Model | 1 |
| 12B | Back Disc (Includes Disc Washer for 23-24 and larger Discs)..... | Spec Model | 1 |
| 13 | 15-1/2" Diameter 304 SST Wrap Around Drum (Specify Model)..... | 9905.0178 | 1 |
| 13 | 10-1/2" Diameter 304 SST Wrap Around Drum (Not Shown) (Specify Model) | 9905.0138 | 1 |
| 19 | N Series Spring Reel Frame Assembly Complete | Spec Model | 1 |
| 20 | N Series Spring Mounting Bracket, per P20A-00280 (for "A", "B" & "J" Springs) ... | 9922.0050 | 1 |
| 25A | 3/8"-16 x 3/4" Spinlock Bolt..... | 9904.2201 | 16 or 24 |
| 25B | 1/4"-20 x 1/2" Spinlock Bolt (For Ratchet Wheel) | 9904.1058 | 6 |
| 25C | 3/8"-16 x 1-1/2" Spinlock Bolt (For "A" & "B" Springs) | 9904.2204 | 2 |
| 25D | 3/8"-16 x 3/4" Spinlock Bolt (For "A" & "B" Springs) | 9904.2201 | 2 |
| 25E | 5/16"-18 x 3/4" Thread Cutting Hex Head Bolt (For Ratchet Locking Ass'y)..... | 9958.0055 | 4 |
| 25F | 3/8"-16 x 7/8" Hex Socket Button Head Screw | 9904.9201 | 4 |
| 25G | 5/16"-18 x 1-1/2" Hex Socket Button Head Screw (For "J" & "C" Springs) (Not Shown) | 9904.9104 | 1 or 2 |
| 25H | 5/16"-18 x 3/4" Hex Socket Button Head Screw (For "J" Spring) (Not Shown) | 9904.9101 | 1 |
| 27A | 3/8"-16 Spinlock Nut..... | 9904.6200 | 12 or 16 |
| 27B | 5/16"-18 Large Flange Spinlock Nut (For "J" & "C" Springs) (Not Shown)..... | 9904.6100 | 2 |
| 28A | 1-7/8" O.D. x 1-5/16" I.D. x 1/8" Thick Hub Spacer (Plastic) | 9954.0021 | 3 |
| 28B | Oval Spring Spacer, per P28A-00020 (For "A" & "B" Springs) | 9922.0032 | 1 |
| 28C | Plastic Ratchet Pawl Spacer, per P28A-00300..... | 9922.0022 | 1 |
| 28D | Stainless Steel Ratchet Pawl Washer, per P28A-00820 | 9922.0061 | 1 |
| 28E | Spring Spacer, per P28A-00070 (For "C" and "J" Springs) (Not Shown) | 9922.0033 | 1 |
| 28F | 1/2" Thick Spring Spacer, per P28A-00330 (For "C" Spring) (Not Shown) | 9954.0015 | 1 |
| 28G | 3/8" Flat Washer (For "C" Spring) (Not Shown)..... | 9954.0007 | 1 |
| 29 | 3/16" x 3/16" x 1" Long Square Machine Key for Spring Arbor (Not Shown) | 9922.0031 | 1 |
| 30A | 3/16" x 3/4" Stainless Steel Cotter Pin for N Series Ratchet | 9922.0028 | 1 |
| 30B | Ratchet Pawl Spring..... | 9922.0008 | 1 |
| 30C | 1/8" x 1" Stainless Steel Cotter Pin for Ratchet Pawl | 9922.0024 | 1 |
| 34 | 1/2" Dual Welded Steel Barstock Hub Assembly (Specify Model and Fittings)..... | 9901.0671 | 1 |
| 41A | 1/2" 90 Degree MxF Steel 3000 PSI Balanced Pressure Swivel Joint (BUNA)..... | 9927.8138 | 2 |
| 41B | 1/2" 90 Degree MxF Steel 5000 PSI Full Flow Swivel Joint (AFLAS) | 9927.8151 | 2 |
| 63 | "B" Spring w/ Arbor (Item 64D) | 9921.0015 | 1 |
| 63 | "J" Spring w/ Arbor (Item 64D) (Not Shown)..... | 9921.0030 | 1 |
| 63 | "A" Spring w/ Arbor (Item 64E) (Not Shown) | 9921.0010 | 1 |
| 63 | "C" Spring w/ Arbor (Item 64D) (Not Shown)..... | 9921.0018 | 1 |
| 64A | Ratchet Wheel and Hardware (Item 25B), per P64A-00120..... | 9922.0015 | 1 |
| 64B | Dust Cap for Inner Spring Side..... | 9922.0036 | 1 |
| 64C | Dust Cap for Outer Spring Side (For 600 Series Reels)..... | 9922.0041 | 1 |
| 64D | Spring Arbor, per P64A-00112 (For "B", "J" or "C" Springs) | 9922.0002 | 1 |
| 64D | Spring Arbor, per P64A-00111 (For "A" Spring) | 9922.0001 | 1 |
| 64E | Ratchet Pawl Housing (Inner) per P64A-00070..... | 9922.0027 | 1 |
| 64F | Ratchet Pawl Housin (Outer) per P64A-00080 | 9922.0026 | 1 |
| 64G | Right Hand Ratchet Pawl & Pin (Item 30C)..... | 9922.0302 | 1 |
| 64G | Left Hand Ratchet Pawl & Pin (Item 30C) (For Reverse Springs ONLY)..... | 9922.0301 | 1 |
| 64H | Right Hand Ratchet Locking Assembly Complete | 9922.0312 | 1 |
| 64H | Left Hand Ratchet Locking Assembly Complete (For Reverse Springs ONLY) | 9922.0311 | 1 |
| 69 | N205 Complete Roller Assembly for Model N617 | 9939.0112 | 1 |
| 69 | N203 Complete Roller Assembly for Model N615 (Not Shown)..... | 9939.0110 | 1 |
| 70 | N Series Single Roller Arm (Specify Model) | 9941.0030 | 2 |
| 91 | 5" Long Anodized Threaded Spacer Pipe for Model N617..... | 9904.0310 | 6 or 10 |
| 91 | 3" Long Anodized Threaded Spacer Pipe for Model N615 (Not Shown)..... | 9904.0306 | 6 or 10 |